

--	--	--	--	--	--	--

2025 XII 29 1100

– N 714 –

SCIENCE & TECHNOLOGY PART II (72)

**(REVISED COURSE)**

Time : 2 Hours

(Pages 4)

Max. Marks : 40

**Note :- (i) It is necessary to solve all the questions.**

**(ii) Draw neat and labelled diagrams wherever necessary.**

**(iii) Start every new main question on separate page.**

**(iv) Figures on the right indicate marks.**

**(v) For Each Multiple Choice Question (1.B), ONLY first answer will be considered.**

**(vi) Write answer of each MCQ with option number.**

**Eg. i) a..... ii) c.....**

**Q.1 (A) Choose the proper alternative and fill in the blanks:**

**5**

**(1) \_\_\_\_\_ of West Bengal is reserved for tigers.**

- (a) Manas sanctuary (b) Jim corbett sanctuary  
(c) Govind wildlife sanctuary (d) Sunderban sanctuary

**(2) The solar lamp uses the ..... Energy.**

- (a) Heat (b) Wind (c) Light (d) Sound

**(3) Classification proposed by \_\_\_\_\_ is known as 'Artificial method'.**

- (a) Carl Woese (b) Linnaeus  
(c) Aristotle (d) Dobzhansky and Meyer

**(4) \_\_\_\_\_ is at forefront in controlling the cybercrimes and it has been proved to be a first state to start a separate cyber crime unit.**

- (a) Gujarat (b) Chhattisgarh  
(c) Assam (d) Maharashtra

**(5) \_\_\_\_\_ is an important link between emergency measures and national progress.**

- (a) Redemption (b) Response  
(c) Restoration (d) Resurgence

**(B) Attempt the following:**

**5**

**(1) Find the odd one out:**

**1**

Folding tongue, Plicae semilunaris, Ear muscles, Wisdom teeth

**(2) State 'True' or 'False', if 'False' correct it:**

**1**

To take selfie on road is the invitation for accident

**(3) Write the correlated terms:** **1**

Natamycin : Microbial restrictor :: Xanthenes : \_\_\_\_\_

**(4) Name the following:** **1**

The phase of disaster management in which maximum lives can be saved by quick action after disaster.

**(5) Answer the following in one line:** **1**

Match the correct pair:

**Column 'A'**

(1) Forest Conservation Act

**Column 'B'**

(a) 1986

(b) 1980

(c) 1970

**Q.2(A) Give reasons:(Any Two)** **4**

(1) Vertebrates have been slowly originated from invertebrates.

(2) Girls are facing the problem of stress due to gender inequality.

(3) Use of mutant strains has been increased in industrial microbiology.\*

**(B) Answer the following:(Any Three)** **6**

(1) (a) What is the name of structure shown in diagram below:



(b) Label the structure properly.

(2) What do we learn from the story of Jadav Molai Peyang?\*

(3) Human female reproductive system.\*

(4) State any four benefits of animal classification.

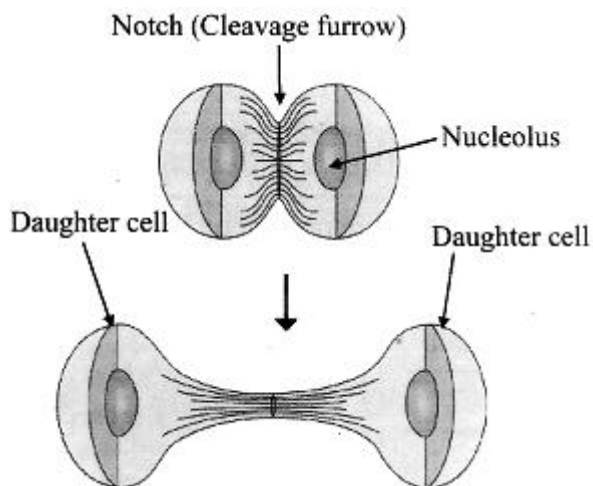
(5) Give three examples of each.

(i) Hobbies to reduce stress.

(ii) Diseases endangering the social health.\*

**Q.3 Answer the following:(Any Five)** **15**

(1) The diagram is representing a portion of cell division. Explain the depicted process in your own words.

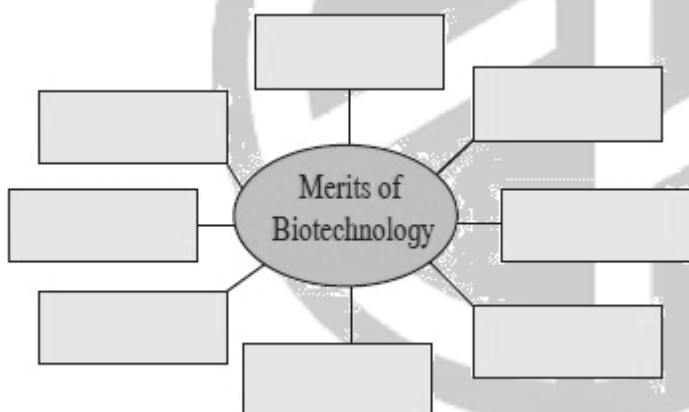


(2) What are the meanings of following symbols? Write your role accordingly?\*



- (3) a) How is xanthan gum is obtained?  
 b) State its two properties.  
 c) Give its two uses.

(4) Complete the chart:\*



(5) What are the objectives of mock drill?

(6) Complete the table below:

<i>WHAT</i>	<i>WHERE</i>	<i>OXYGEN NEEDED?</i>	<i>NET ATP</i>
GLYCOLYSIS	-----	-----	2
CITRIC ACID CYCLE(KREBS CYCLE)	MITOCHONDRIA	-----	-----
ELECTRON TRANSPORT CHAIN (ETC)	-----	YES	-----
		TOTAL ATP PRODUCED	-----

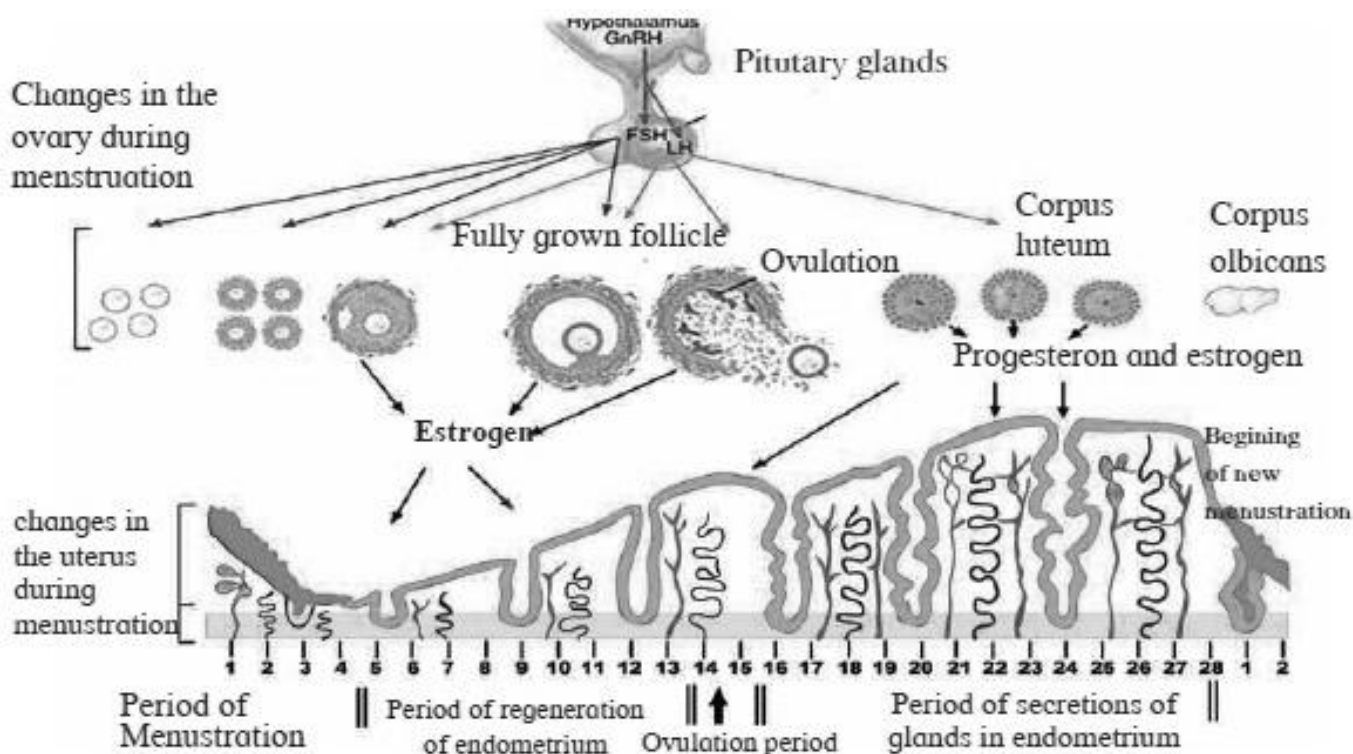
(7) Write a short note on Blue revolution.

(8) Distinguish between butterfly and bat with the help of four distinguishing properties.\*

**Q.4 Answer the following:(Any One)**

**5**

(1) Observe the diagram given below and answer the following questions:



i. What is the period of menstruation?

ii. On which day does ovulation occur during menstrual cycle?

iii. During which period of menstrual cycle the corpus luteum remains active?  
Which hormones are secreted by corpus luteum?

iv. During menstrual cycle which reproductive organs undergo changes?

v. What is regeneration of endometrium?

vi. Which period is called the “Period of secretions of glands in endometrium”?

(2) Explain with diagram step-by-step energy conversion in Nuclear Power Plant\*

**....All The Best....**



**— SCHOOL SECTION —**

**CIDCO BRANCH**

9168 444 999

1<sup>ST</sup> FLOOR, INFRONT OF BALIRAM PATIL SCHOOL

**HARSUL-SAWANGI BRANCH**

9168 044 999

1<sup>ST</sup> FLOOR, INFRONT OF PANAD SUPER MARKET